

Electrical and Mechanical Application Information

10/1/2011

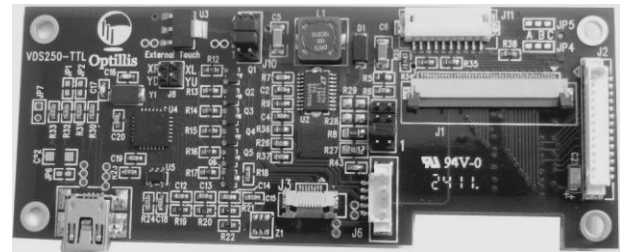
The Optillis **VDS250** converts LVDS to CMOS signals and includes onboard 4 wire touch and LED back Light control. The **VDS250** supports several CMOS display sizes with dual output connectors. The DF9-31S1V found on standard VGA displays and a flex connection for Optrex's 5.0" WVGA TFT's .

Features and Advantages

- ✓ Direct connection to multiple displays (see below)
- ✓ Mounts to rear of the display
- ✓ Powered by USB connector.
- ✓ LED backlight driver and 4 wire USB touch controller
- ✓ Support for various LED backlight brightness's
- ✓ One Year Warranty

ClearClass LVDS to TTL with LED Driver & Touch

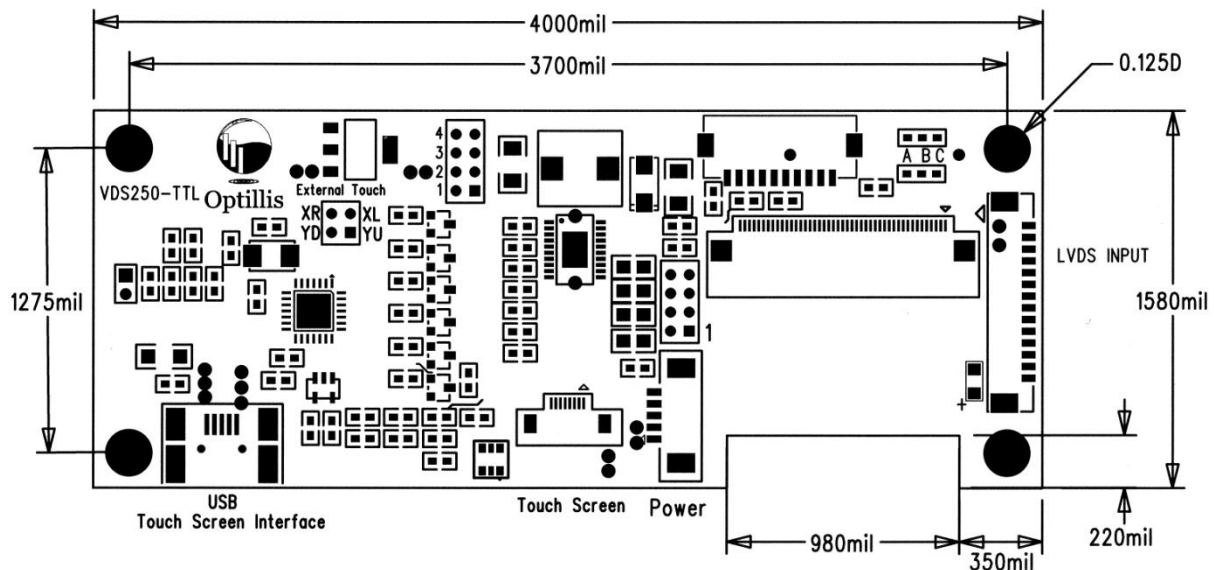
VDS250-TTL-Xxx



Part Number Variations

VDS250-TTL-1	5.0"	Optrex TFT	w/o TS
VDS250-TTL-1TS	5.0"	Optrex TFT	w/TS
VDS250-TTL-2	6.5"	51750 TFT	w/o TS
VDS250-TTL-2TS	6.5"	51750 TFT	w/TS
VDS250-TTL-3	VGA	6.5-10.4"	w/o TS
VDS250-TTL-3TS	VGA	6.5-10.4"	w/TS

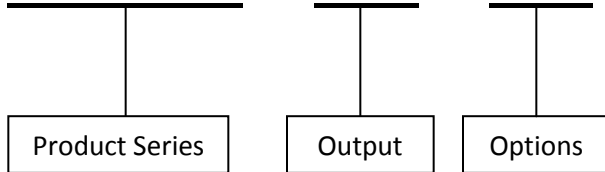
See specification for full description



VDS250-TTL-Xxx

Ordering Information:

VDS250 – TTL – Xxx



Option	Panel Support
-1	Optrex 5.0" T-(55382/55423)GD050J-LW-AAN Note: W/O Touch Controller Installed
-1TS	Optrex 5.0" T-(55382/55423)GD050J-LW-ABN Note: W/Touch Controller Installed
-2	Optrex 6.5" T-51750GD065J-LW-ADN, -ANN Note: W/O Touch Cntl & Separate LED Conn
-2TS	Optrex 6.5" T-51750GD065J-LW-AQN Note: W/Touch Cntl & Separate LED Conn
-3	Optrex VGA Panels *See List Below Note: W/O Touch Controller Installed
-3TS	Optrex VGA Panels *See List Below Note: W/Touch Controller Installed

-3 Panel Support (Series)		
6.5" 55465 -AAN, ABN	8.4" 55467-AAN	10.4" 55532-ADN-ACN
-3TS Panel Support (Series)		
6.5" Consult Factory	8.4" Consult Factory	10.4" Consult Factory